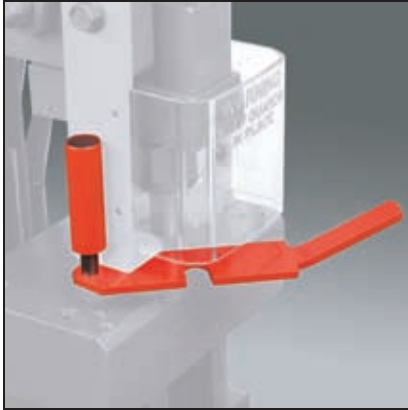


# IRONWORKER ACCESSORIES

SHOWN WITHOUT SAFETY GUARDS FOR CLARITY



## STRIPPER REDUCING PLATE

Use with smaller punches and thinner material



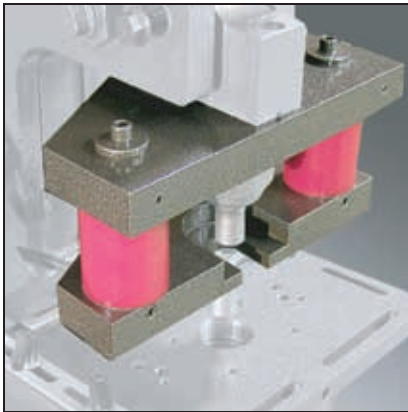
## 48" MANUAL BACK GAUGE

Cut repeatable lengths of angle and flat stock



## 48" AUTO CUT

Production cutting for  
repeatable lengths



## URETHANE STRIPPER

Ideal for sheet metal fabrication



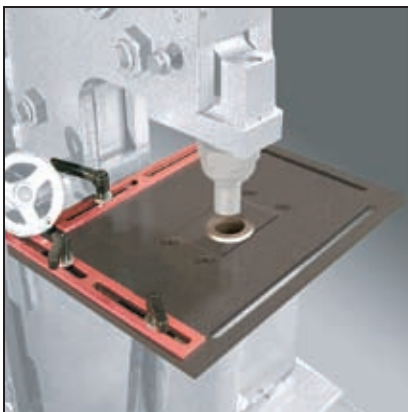
## 241 PUNCH STATION

Ideal for punching large format  
and patterned holes



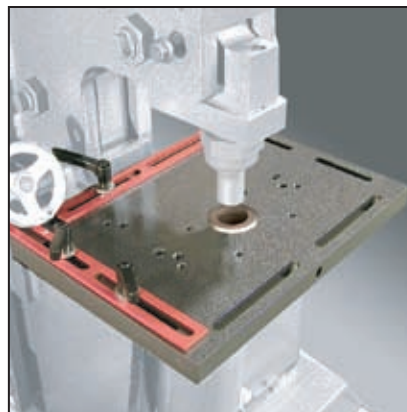
## PEDESTAL DIE TABLE

Punch leg-down angle  
Available in oversize



## GAUGING TABLE KIT

3/8" x 12" x 16", bolts to Pedestal Die Table,  
includes one short and one long fence,  
custom sizes available



## HEAVY DUTY GAUGING TABLE KIT

1" x 12" x 16", includes one short and  
one long fence, available in oversize



## ELECTRIC STROKE CONTROL

Increase production from your punch,  
notch or shear stations



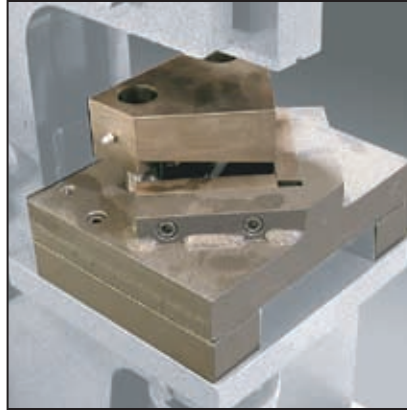
# IRONWORKER OPTIONAL TOOLING

SHOWN WITHOUT SAFETY GUARDS FOR CLARITY



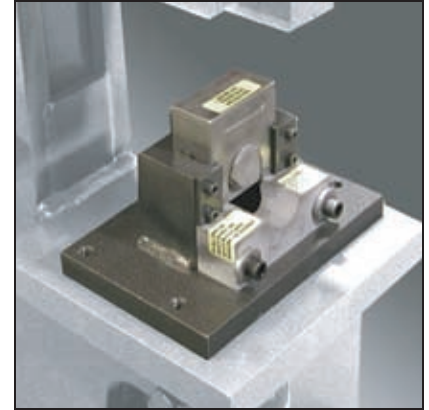
## BRAKE

In 7", 8", 10" and 12" lengths\* — includes a standard "punch" and a four-way die for braking 1/16", 1/8", 3/16", and 1/4" material to a 90° angle



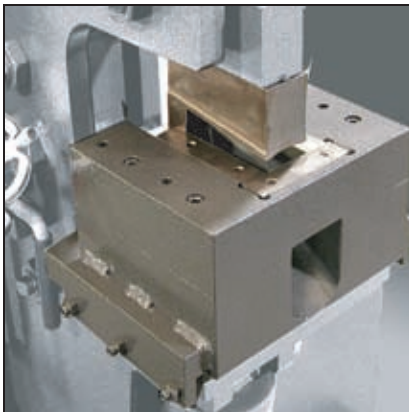
## ANGLE NOTCHER

Tooling takes a precise 92° notch from the bottom leg of angle iron up to 3" x 3" x 1/4" maximum



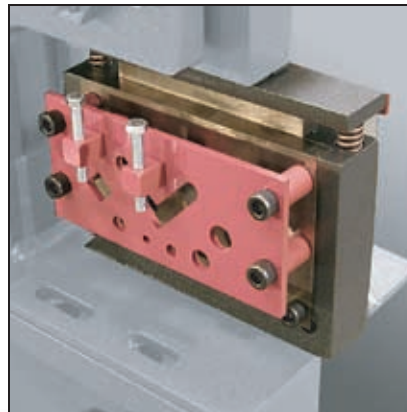
## PIPE NOTCHER

Designed for perfect saddle joint connections in schedule-40 pipe 1/2" - 2" diam. (schedule-80 available as special order)



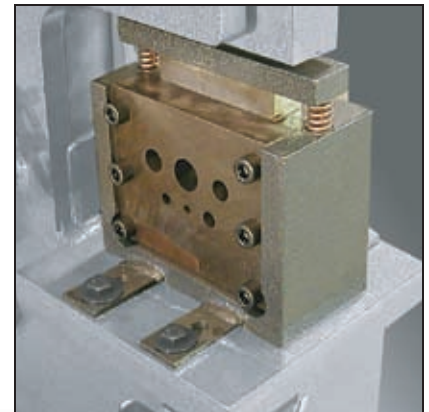
## COPER/NOTCHER

Allows for a small "nibble" or a large notch to be taken out of plate, bar stock, or angle\*



## MULTI SHEAR

Angle Shear: 2" x 2" x 1/4"  
Bar Shear: 1/4" x 6"  
Rod Shear / Round: 1/4", 3/8", 1/2", 5/8", 3/4"  
Rod Shear / Square: 13/16"



## ROD SHEAR

For a more precise cut on your round stock sizes 1/4", 3/8", 1/2", 5/8", 3/4", 1"

Tooling to punch, notch and cut flats, rounds, and angles. EDWARDS IRONWORKERS give you the capacity and flexibility to power through the toughest fabrication jobs without exhausting your budget.

**WORK MORE  
IRON  
FOR LESS COIN**



\* ACCESSORY SIZE/CAPACITY VARIES BY MACHINE

EDWARDS MFG. CO. P.O. BOX 166, ALBERT LEA, MN 56007